

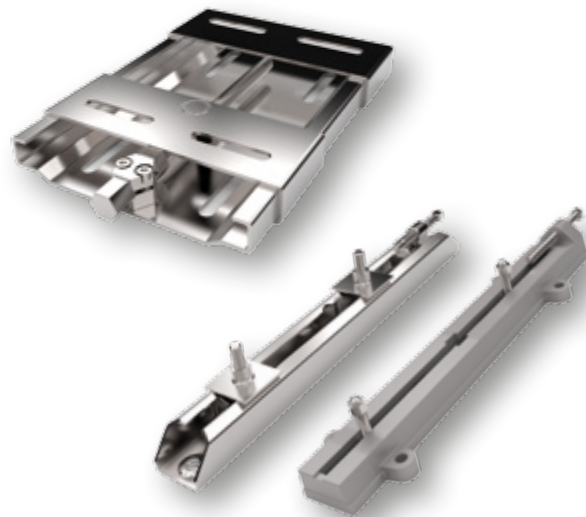


## POWER TRANSMISSION MOTOR SLIDE RAILS



# MOTOR SLIDE RAILS

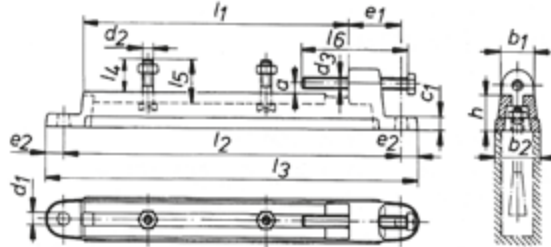
Motor slides and motor slide rails are the ideal mounting base for your motor. Whether made of steel or cast iron – durability and high flexibility are the hallmarks of our easy-to-install motor slides and motor slide rails.



## PRODUCT BENEFITS

- > Proven quality
- > Available in many nominal lengths
- > Easy installation
- > Durable, since insusceptible to corrosion
- > Noise-absorbing and environmentally friendly
- > Short delivery lead times
- > Universal use
- > Low in price
- > Therefore cost-effective

# MOTOR SLIDE RAILS MADE OF CAST IRON LIGHT WEIGHT DESIGN

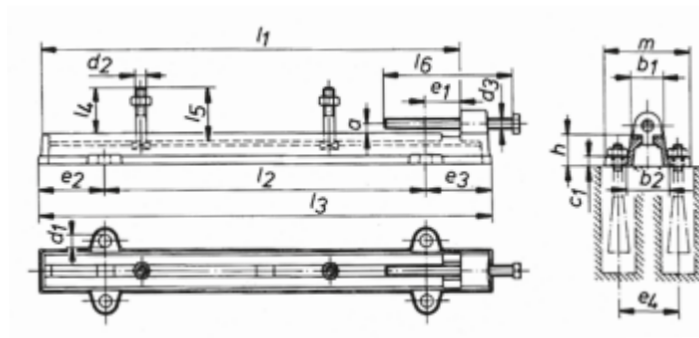


Design A  
length  $l_1 = 250$  by 650 mm

Sliding length	$a$	$b_1$	$b_2$	$c_1$	$d_1$	$e_1$	$e_2$	$e_4$	$h$	$l_2$	$l_3$	$l_4$	$m$	Bending moment
$l_1$ mm	mm	mm	mm	mm	mm	mm	mm	mm	mm	mm	mm	mm	mm	$M_b$ Nm
250	6	30	42	12	12	46	17.5	–	33	315	350	30	–	134
330	8	34	50	13	15	43	22.5	–	35	390	435	35	–	192
400	8	38	55	15	15	43	22.5	–	42	460	505	48	–	285
450	8	40	60	15	15	55	22.5	–	44	530	575	47	–	348
500	8	45	65	18	15	55	22.5	–	48	580	625	47	–	480
550	12	46	65	18	19	55	22.5	–	53	630	675	60	–	527
600	12	50	70	18	19	55	25.0	–	55	680	730	59	–	428
650	12	54	75	18	19	53	25.0	–	55	725	775	59	–	466

Sliding length	Fastening bolt for machine	Clamping bolts	Weight	Motor size
$l_1$ mm	$d_2 \times l_5$ mm	$d_3 \times l_6$ mm	kg	
250	M 8 x 40	M 10 x 100	1.5	80/90
330	M 10 x 45	M 12 x 120	2.25	100/112/132
400	M 12 x 60	M 12 x 120	3.25	160/180
450	M 12 x 60	M 12 x 120	4.0	160/180
500	M 12 x 60	M 12 x 150	6.0	160/180
550	M 16 x 75	M 16 x 150	7.0	200/225
600	M 16 x 75	M 16 x 150	8.0	200/225
650	M 16 x 75	M 16 x 150	8.75	200/225

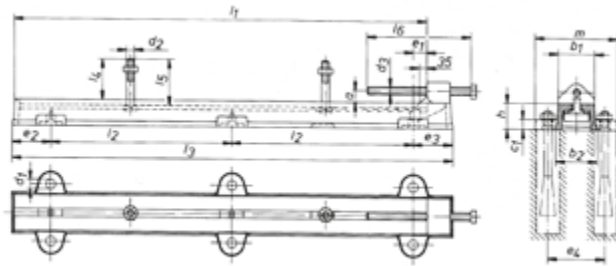
- Material for slide rails: cast iron EN- GJL 200. Fastening bolts with square head and hexagonal nuts for machine as well as clamping bolts are supplied.



Design B  
length  $l_1 = 700$  by 1500 mm

Sliding length	$a$	$b_1$	$b_2$	$c_1$	$d_1$	$e_1$	$e_2$	$e_4$	$h$	$l_2$	$l_3$	$l_4$	$m$	Bending moment
$l_1$ mm	mm	mm	mm	mm	mm	mm	mm	mm	mm	mm	mm	mm	mm	$M_b$ Nm
<b>700</b>	16	65	80	18	19	105	150.0	115	60	450	750	86	155	653
<b>800</b>	16	68	88	22	19	105	150.0	120	60	550	850	82	175	768
<b>900</b>	16	70	92	22	19	100	152.5	130	68	650	955	80	185	981
<b>1000</b>	16	75	104	23	24	100	155.0	140	72	750	1060	100	200	1420
<b>1100</b>	16	80	105	23	24	120	185.0	140	74	800	1170	100	200	1571
<b>1200</b>	16	85	110	25	24	120	190.0	140	76	900	1280	100	200	1697
<b>1300</b>	16	85	115	25	28	120	180.0	160	78	1010	1370	125	225	1788
<b>1400*</b>	16	90	120	25	28	145	215.0	165	80	1050	1480	129	245	2289
<b>1500*</b>	16	90	120	30	28	145	215.0	170	90	1150	1580	122	250	2838

Sliding length	Fastening bolt for machine	Clamping bolts	Weight	Motor size
$l_1$ mm	$d_2 \times l_5$ mm	$d_3 \times l_6$ mm	kg	
<b>700</b>	M 20 x 100	M 20 x 200	12.5	250/280
<b>800</b>	M 20 x 100	M 20 x 200	16.0	250/280
<b>900</b>	M 20 x 100	M 20 x 200	20.0	250/280
<b>1000</b>	M 24 x 125	M 24 x 300	27.0	315
<b>1100</b>	M 24 x 125	M 24 x 300	30.0	315
<b>1200</b>	M 24 x 125	M 24 x 300	35.0	315
<b>1300</b>	M 24 x 150	M 24 x 350	38.5	315/355
<b>1400*</b>	M 24 x 150	M 24 x 350	47.5	315/355
<b>1500*</b>	M 24 x 150	M 24 x 350	55.0	315/355



Design C  
length  $l_1 = 1600$  by  $2200$  mm

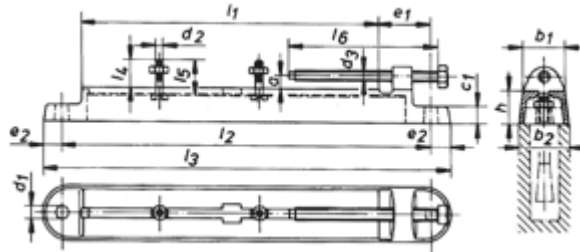
Sliding length	$a$	$b_1$	$b_2$	$c_1$	$d_1$	$e_1$	$e_2$	$e_4$	$h$	$l_2$	$l_3$	$l_4$	$m$	Bending moment
$l_1$ mm	mm	mm	mm	mm	mm	mm	mm	mm	mm	mm	mm	mm	mm	$M_b$ Nm
<b>1600*</b>	45	140	160	40	28	55	150	220	100	700	1700	152	310	3761
<b>1700*</b>	45	140	160	40	28	55	150	220	100	750	1800	152	310	3798
<b>1900*</b>	45	160	180	45	28	55	150	250	110	850	2000	150	340	4890
<b>2200*</b>	45	180	200	45	35	55	150	280	125	1000	2300	225	370	6950

Sliding length	Fastening bolt for machine	Clamping bolts	Weight	Motor size
$l_1$ mm	$d_2 \times l_5$ mm	$d_3 \times l_6$ mm	kg	
<b>1600*</b>	M 27 x 175	M 30 x 400	102.5	–
<b>1700*</b>	M 27 x 175	M 30 x 400	107.5	–
<b>1900*</b>	M 27 x 175	M 30 x 400	152.5	–
<b>2200*</b>	M 30 x 250	M 30 x 400	205.0	–

► Material for slide rails: cast iron EN- GJL 200. Fastening bolts with square head and hexagonal nuts for machine as well as clamping bolts are supplied.

\* Non-stock items

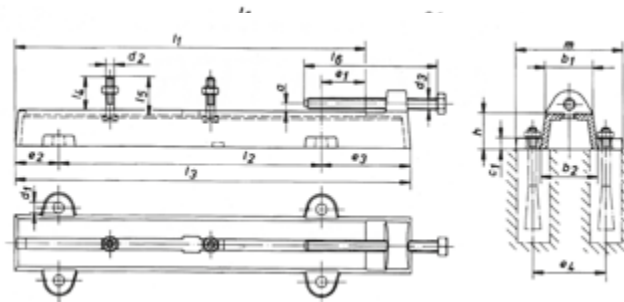
# MOTOR SLIDE RAILS MADE OF CAST IRON DIN 42923



Sliding length = 265 by 500 mm

Sliding length	$a$	$b_1$	$b_2$	$c_1$	$d_1$	$e_1$	$e_2$	$e_3$	$e_4$	$h$	$l_2$	$l_3$	$l_4$	$m$	Bending moment
$l_1$ mm	mm	mm	mm	mm	mm	mm	mm	mm	mm	mm	mm	mm	mm	mm	$M_b$ Nm
<b>265</b>	6	40	50	18	10	45	15	–	–	35	325	355	28	–	80
<b>315</b>	8	45	55	18	12	55	20	–	–	35	390	430	28	–	100
<b>355</b>	8	50	65	23	12	55	20	–	–	40	430	470	37	–	200
<b>400</b>	8	55	70	25	15	65	25	–	–	55	480	530	37	–	400
<b>500</b>	12	70	85	30	19	80	30	–	–	55	610	670	50	–	700

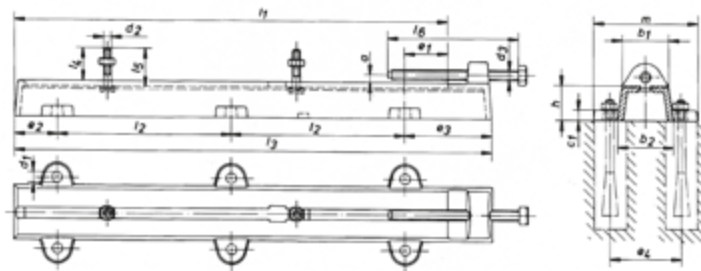
Sliding length	Fastening bolt for machine	Clamping bolts	Weight	Motor size
$l_1$ mm	$d_2 \times l_5$ mm	$d_3 \times l_6$ mm	kg	
<b>265</b>	M 8 x 35	M 10 x 120	1.75	80/90
<b>315</b>	M 8 x 35	M 12 x 160	2.5	80/90
<b>355</b>	M 10 x 45	M 12 x 160	3.25	100
<b>400</b>	M 10 x 45	M 12 x 160	4.25	112/132
<b>500</b>	M 12 x 60	M 20 x 240	9.0	160/180



Sliding length = 630 by 1000 mm

Sliding length	a	b <sub>1</sub>	b <sub>2</sub>	c <sub>1</sub>	d <sub>1</sub>	e <sub>1</sub>	e <sub>2</sub>	e <sub>3</sub>	e <sub>4</sub>	h	l <sub>2</sub>	l <sub>3</sub>	l <sub>4</sub>	m	Bending moment
l <sub>1</sub> mm	mm	mm	mm	mm	mm	mm	mm	mm	mm	mm	mm	mm	mm	mm	M <sub>b</sub> Nm
<b>630</b>	12	85	100	35	19	80	80	160	130	65	470	710	58	182	1000
<b>800</b>	16	100	120	35	28	100	100	200	165	75	600	900	76	225	2500
<b>1000</b>	16	120	140	40	28	140	140	240	190	80	720	1100	82	250	4000

Sliding length	Fastening bolt for machine	Clamping bolts	Weight	Motor size
l <sub>1</sub> mm	d <sub>2</sub> x l <sub>5</sub> mm	d <sub>3</sub> x l <sub>6</sub> mm	kg	
<b>630</b>	M 16 x 70	M 20 x 240	14	200/225
<b>800</b>	M 20 x 90	M 24 x 300	25	250/280
<b>1000</b>	M 24 x 100	M 24 x 300	40	315



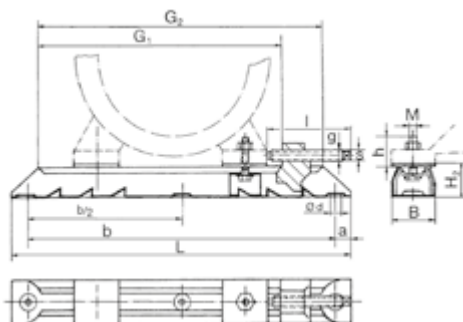
Sliding length = 1250 mm

Sliding length	a	b <sub>1</sub>	b <sub>2</sub>	c <sub>1</sub>	d <sub>1</sub>	e <sub>1</sub>	e <sub>2</sub>	e <sub>3</sub>	e <sub>4</sub>	h	l <sub>2</sub>	l <sub>3</sub>	l <sub>4</sub>	m	Bending moment
l <sub>1</sub> mm	mm	mm	mm	mm	mm	mm	mm	mm	mm	mm	mm	mm	mm	mm	M <sub>b</sub> Nm
<b>1250</b>	16	120	140	35	28	140	140	240	190	80	485	1350	–	–	4500

Sliding length	Fastening bolt for machine	Clamping bolts	Weight	Motor size
l <sub>1</sub> mm	d <sub>2</sub> x l <sub>5</sub> mm	d <sub>3</sub> x l <sub>6</sub> mm	kg	
<b>1250</b>	M 24 x 100	M 24 x 300	47.5	315/355

► Material for slide rails: cast iron EN- GJL 200. Fastening bolts with square head and hexagonal nuts for machine as well as clamping bolts are supplied.

# MOTOR SLIDE RAILS MADE OF STEEL



## WITH MOVABLE FACE PLATE JAWS

Size	Motor size	L mm	B mm	H <sub>2</sub> mm	Plate thickness mm	G <sub>1</sub> mm	G <sub>2</sub> mm	a mm	b mm	b/2 mm	Ø d mm	M x h mm	l x g x s mm	Weight kg
<b>312/6</b>	63/71	312	40	28	2	240	262	16	280	–	12	M 6 x 19	75 x 10 x 8	1.4
<b>312/8</b>	80/90	312	40	28	2	240	262	16	280	–	12	M 8 x 27	75 x 10 x 8	1.5
<b>375/6</b>	63/71	375	40	28	2	305	325	16	343	–	12	M 6 x 19	75 x 10 x 8	1.5
<b>375/8</b>	80/90	375	40	28	2	305	325	16	343	–	12	M 8 x 27	75 x 10 x 8	1.6
<b>375/10</b>	100/112	375	40	28	2	305	325	16	343	–	12	M 10 x 32	75 x 10 x 8	1.6
<b>395/8</b>	80/90	395	50	40	3	302	325	20	355	–	12	M 8 x 28	100 x 12 x 9	3.4
<b>395/10</b>	100/112	395	50	40	3	302	325	20	355	–	12	M 10 x 35	100 x 12 x 9	3.4
<b>495/8</b>	80/90	495	50	40	3	405	425	20	455	–	12	M 8 x 29	100 x 12 x 9	4.0
<b>495/10</b>	100/112/132	495	50	40	3	405	425	20	455	–	12	M 10 x 35	100 x 12 x 9	4.0
<b>495/12</b>	160	495	50	40	3	405	425	20	455	–	12	M 12 x 49	100 x 12 x 9	4.0
<b>530/10</b>	132	530	60	50	4	413	442	25	480	–	14	M 10 x 37	120 x 16 x 12	6.4
<b>530/12</b>	160	530	60	50	4	413	442	25	480	–	14	M 12 x 49	120 x 16 x 12	6.4
<b>630/10</b>	132	630	60	50	4	515	542	25	580	–	14	M 10 x 37	120 x 16 x 12	8.2
<b>630/12</b>	160/180	630	60	50	4	515	542	25	580	–	14	M 12 x 45	120 x 16 x 12	8.2
<b>686/12</b>	160/180	686	75	60	4	538	575	25	630	315	15	M 12 x 43	155 x 20 x 17	12.8
<b>686/16</b>	200/225	686	75	60	4	538	575	28	630	315	18	M 16 x 62	155 x 20 x 17	12.8

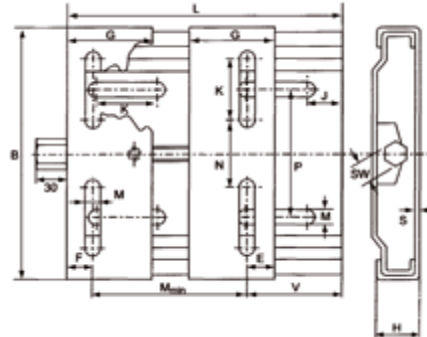
## WITH WELDED-ON FACE PLATE JAWS

Size	Motor size	L mm	B mm	H <sub>2</sub> mm	Plate thickness mm	G <sub>1</sub> mm	G <sub>2</sub> mm	a mm	b mm	b/2 mm	Ø d mm	M x h mm	l x g x s mm	Weight kg
<b>864/16</b>	220/225	864	90	75	4	700	810	32	800	400	24	M 16 x 60	340 x 24 x 17	16.6
<b>864/20</b>	250/280	864	90	75	4	700	810	32	800	400	24	M 20 x 68	340 x 24 x 17	16.6
<b>1072/20</b>	250/280	1072	112	100	5	865	995	36	1000	500	30	M 20 x 77	375 x 30 x 24	33.4
<b>1072/24</b>	315	1072	112	100	5	865	995	36	1000	500	30	M 24 x 88	375 x 30 x 24	33.4
<b>1330/24</b>	315/355	1330	130	125	6	1065	1215	40	1250	625	30	M 24 x 95	430 x 33 x 27	56.6

► Fastening bolts and hexagonal nuts for machine and clamping bolts are supplied.

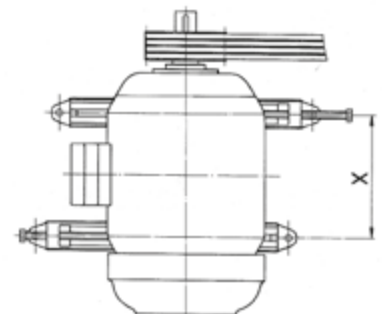
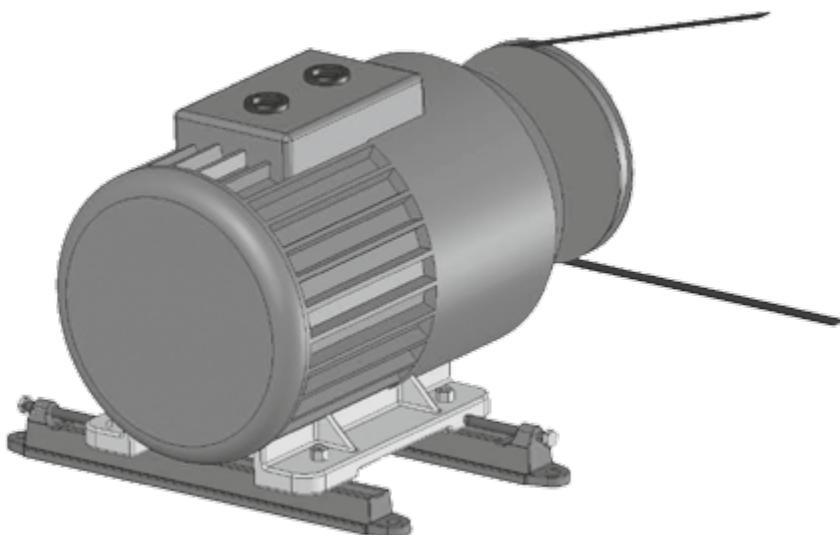


# MOTOR SLIDES MADE OF STEEL



Size	Motor size	L mm	B mm	H mm	M <sub>min</sub> mm	G mm	E mm	J mm	K mm	M mm	N mm	P mm	SW mm	S mm	Weight kg
<b>210</b>	63 - 80	210	195	33	100	70	20	25	50.0	10.5	43	98	19	3	2.3
<b>270</b>	63 - 100	270	195	33	100	70	20	25	50.0	10.5	43	98	19	3	2.7
<b>340</b>	90 - 132	340	290	40	140	95	27	29	62.5	12.5	90	165	22	4	6.3
<b>430</b>	90 - 160	430	290	40	140	95	25	29	62.5	12.5	90	165	22	4	7.4
<b>490</b>	160 - 180	490	410	40	254	95	40	30	60.0	15.0	193	142/284	22	4	12.7

# ARRANGEMENT OF MOTOR SLIDE RAILS







**Optibelt GmbH**

Corveyer Allee 15  
37671 Höxter  
GERMANY

T +49 5271 621  
F +49 5271 976200  
E [info@optibelt.com](mailto:info@optibelt.com)



[www.optibelt.com](http://www.optibelt.com)