

Technical Data Sheet

optibelt HRR

PU Hollow Round Belt, Open-Ended / Endless Joined



Dimensions, Tolerances

Diameter d_1 [mm]: 4.8 and 6.3

Diameter d_2 [mm]: 1.8 and 2.5

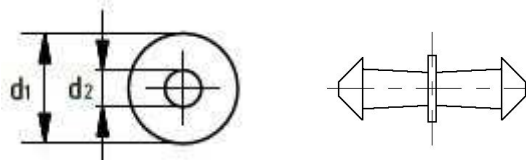
Diameter Tolerances:

$\pm 0.2\text{mm}$

Construction

Polyurethane: Thermoplastic, 85 Shore A, green rough

Connector: Brass



Belt elongation, tension, length and weight		
Diameter d_1 / d_2 [mm]	4.8 / 1.8	6.3 / 2.5
Belt tension [N] at 3% elongation, tension 1.49 N/mm ²	27	48
Belt tension [N] at 6% elongation, tension 2.54 N/mm ²	46	80
Belt tension [N] at 8% elongation, tension 2.93 N/mm ²	53	94
Recommended pre-tension [%]	6-8	6-8
Minimum pulley diameter d_{min} [mm]	35	50
Weight per metre [g/m]	18	32
Roll length on a reel [m]	200	100

Elongation Tension

3 % Elongation 1.50 N/mm²

6 % Elongation 2.55 N/mm²

8 % Elongation 2.98 N/mm²

Belt speed and temperature

Maximum speed v_{max} : 10 m/s

Temperature -30°C bis +60°C

Coefficient of friction

Polished steel:

0.45

Aluminium:

0.35

Polyethylene:

0.30

HRR rough

Calculation of assembling length L

$L = L_{nom} - \text{pre-load [mm]}$

Nominal length L_{nom} [mm]

Selected pre-load [%]