

Technical Data Sheet

optibelt HRR

PU Hollow Round Belt, Open-Ended / Endless Joined



Dimensions, Tolerances

Diameter d_1 [mm]: 4.8 / 6.3 / 8.0 / 9.5

Diameter d_2 [mm]: 1.8 / 2.5 / 3.2 / 3.8

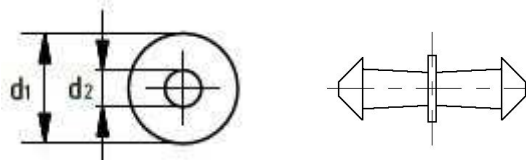
Diameter Tolerances:

$\pm 0.2\text{mm}$

Construction

Polyurethane: Thermoplastic, 75 Shore A, red smooth

Connector: Brass



Belt elongation, tension, length and weight				
Diameter d_1 / d_2 [mm]	4.8 / 1.8	6.3 / 2.5	8.0 / 3.2	9.5 / 3.8
Belt tension [N] at 3% elongation, tension 1.09 N/mm ²	19	34	55	77
Belt tension [N] at 6% elongation, tension 1.83 N/mm ²	32	57	92	131
Belt tension [N] at 8% elongation, tension 2.15 N/mm ²	37	67	108	153
Recommended pre-tension [%]	6-8	6-8	6-8	6-8
Minimum pulley diameter d_{\min} [mm]	30	45	50	65
Weight per metre [g/m]	18	32	51	72
Roll length on a reel [m]	200	100	100	100

Elongation Tension

3 % Elongation 1.09 N/mm²

6 % Elongation 1.83 N/mm²

8 % Elongation 2.15 N/mm²

Belt speed and temperature

Maximum speed v_{\max} : 10 m/s

Temperature -30°C bis +60°C

Coefficient of friction

HRR smooth

Polished steel:

0.90

Aluminium:

0.80

Polyethylene:

0.40

Calculation of assembling length L

$L = L_{\text{nom}} - \text{pre-load [mm]}$

Nominal length L_{nom} [mm]

Selected pre-load [%]